

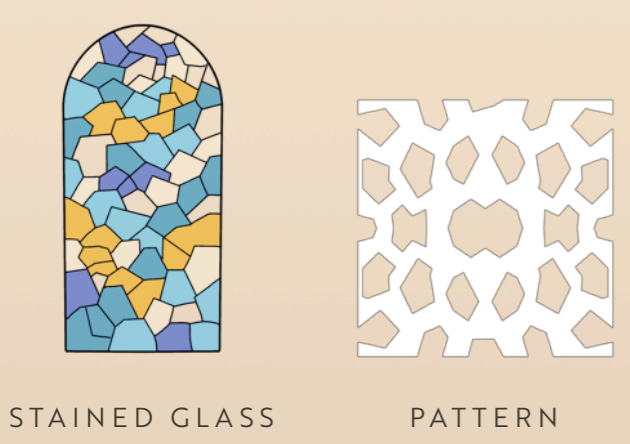
The Fallen Church

Light, a journey among ruins & modernity

LIGHT is our starting point for creating harmony between ancient ruins and modern renovation. Designed as an independent part, this renovation does not aim to erase the ruins but rather to highlight the past architecture. In order to achieve a subtle balance between these two parts, our renovation and the ruins are equally valued.

Inside the building, space is arranged to take maximum advantage of sun exposure. The window-blind main concert hall faces east, where the sunlight is least important, while public areas face south-west, for optimal natural light. In addition, the central area has an exceptional view on the Grottole surroundings.

To ensure a unified whole, the renovation is structured around a perforated outer shell. The created pattern is a graphic reinterpretation of ancient stained glass windows. On the village side, this envelope sumptuously illuminates the ruins, while on the valley side, it protects the building from the strong heat imposed by the Mediterranean climate, and creates an indoor changing play of lights and shadows throughout the year. The light links the two eras, blending the two architectures and inviting future visitors to question and discover the site.



Inside the building, materials and shapes are designed to contrast with the ruins. Our project contains two concert and projection halls with a total capacity of 142 people. The central space has been designed for several activities. This multifunctional area serves as a café, but also as an exhibition and conference center. It can host vernissages and concerts for punctual events.

MULTIFUNCTIONAL AREA

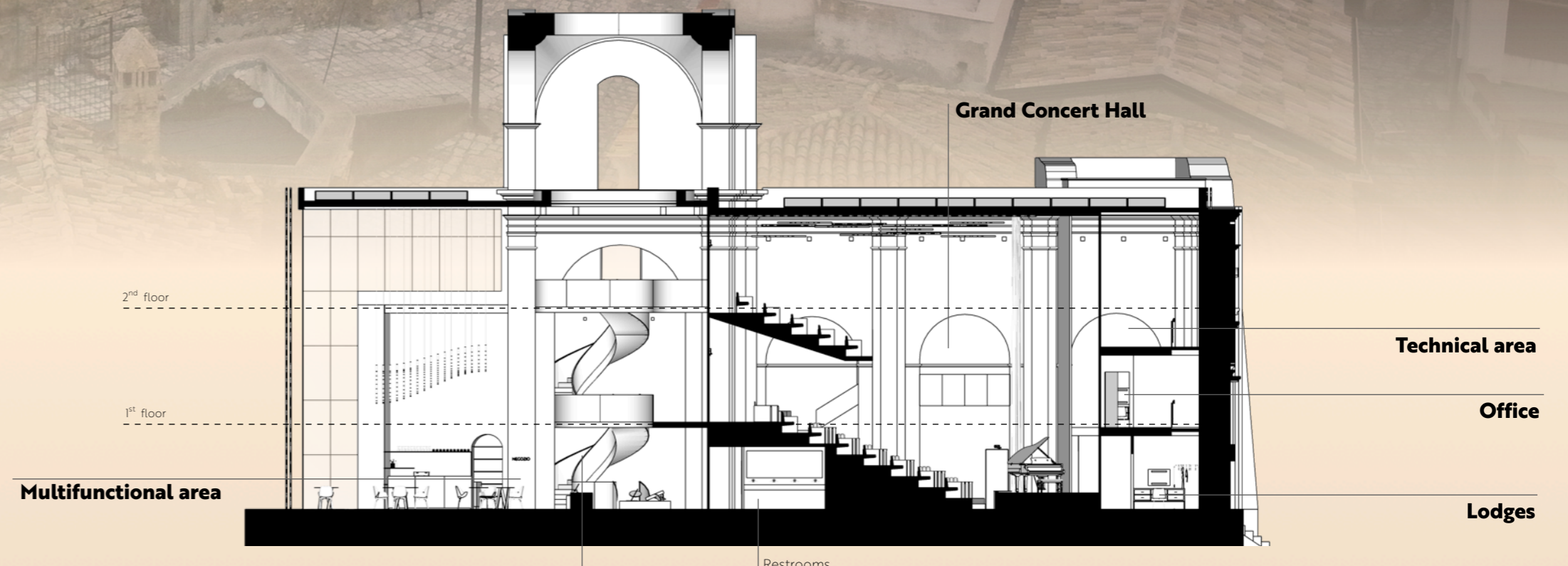


Light also plays an important role in the large concert hall. On the ceiling the same pattern as outside illuminates the room before and after each performance. It also improves the acoustics of the venue. On the floor, lights smoothly illuminate the space through the glass armrests of each seat.

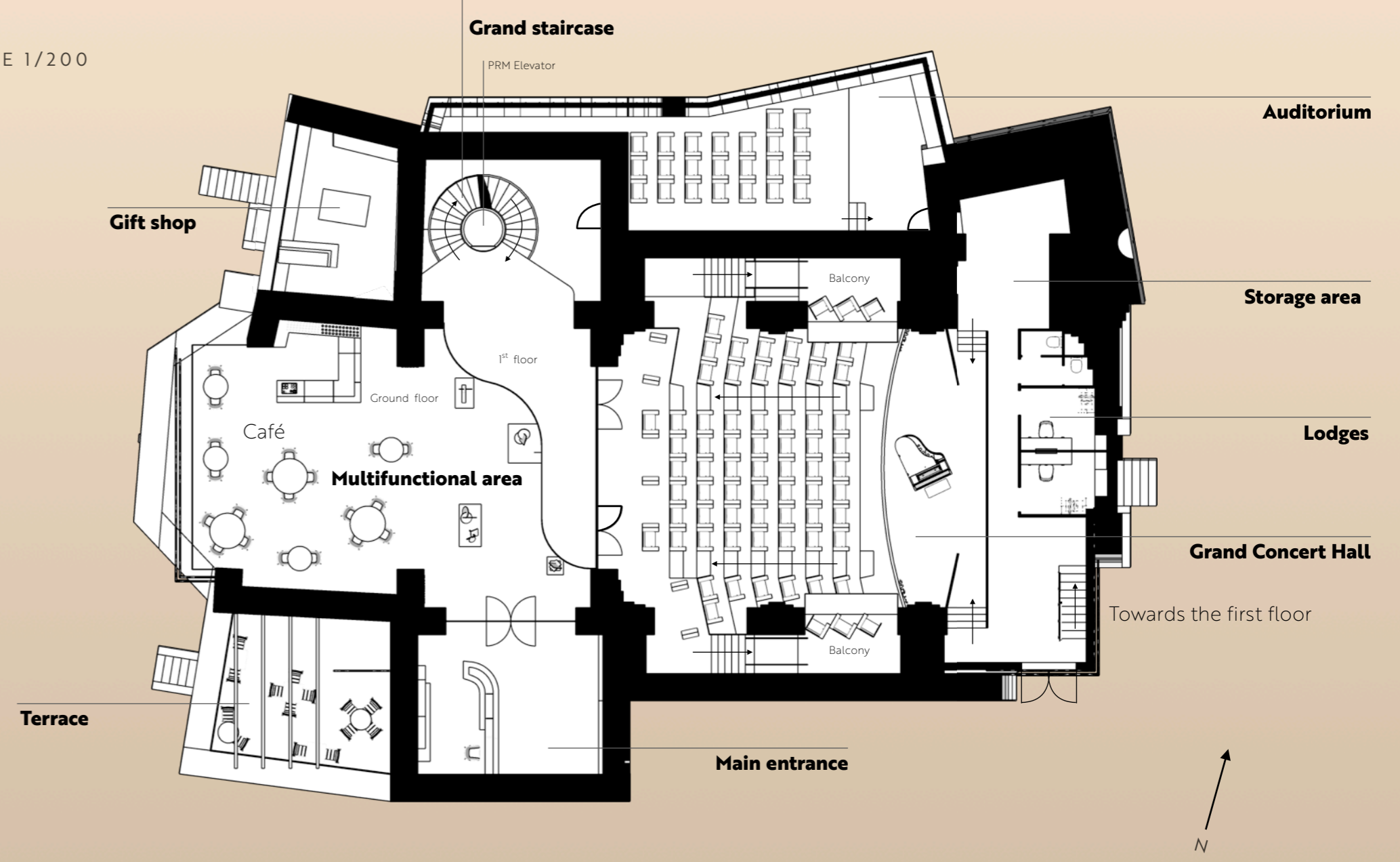
GRAND CONCERT HALL



WEST VIEW



SCALE 1/200



Rooftop
Solar panels & glass roof

Second floor
Main auditorium access, office & technical area

First floor
Main auditorium access & lodges

Ground floor
Main entrance, Multifunctional area, café, gift shop, small auditorium, lodges & restrooms

Basement
Lockers, Storage area & Bike parking

